



15 GREENE VIEW, BRAINTREE CM7

OFFERS IN EXCESS OF £270,000

2 Bedrooms | 1 Bathrooms | 1 Receptions

**** SOLD PRIOR TO MARKETING **** Branocs Estates are pleased to announce this beautifully finished TWO BEDROOM end-terraced house has SOLD STC prior to open marketing! Further similar instructions urgently required!

The well proportioned end-terrace home is conveniently situated close to the town and station, offering easy access to all amenities, whilst offering vehicular access to the A120 in a matter of minutes. Whether you fancy a leisurely stroll to the local shops or a quick commute into the city, this location has it all.

**NOW
SOLD**

GROUND FLOOR

Entrance Porch

Leading to;

Lounge/Diner

Kitchen

FIRST FLOOR

Landing

Bedroom One

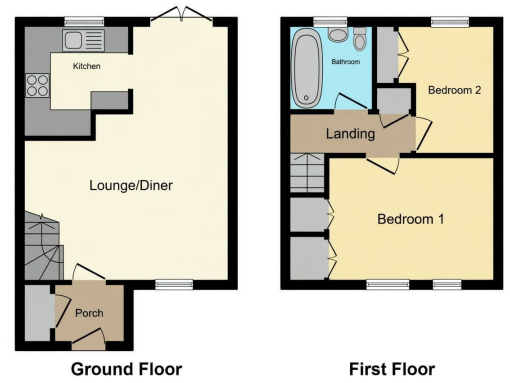
Bedroom Two

Bathroom

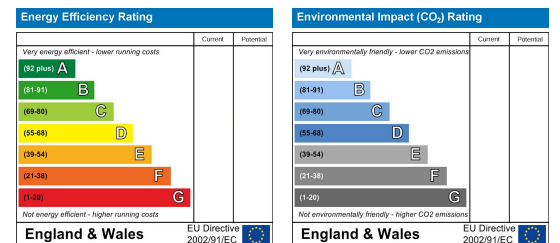
Area Map



Floor Plans



Energy Efficiency Graph



Branocs endeavour to maintain accurate depictions of properties in Virtual Tours, Floor Plans and descriptions, however, these are intended only as a guide and purchasers must satisfy themselves by personal inspection.



Phone: 01376 386555
Email: info@branocsestates.co.uk
Website: www.branocsestates.co.uk

Phoenix House 5 New Street
Braintree
Essex
CM7 1ER

